

Key Remote



Front



Rear

A physical key is stored inside this key remote. It seems compact and smart.

This way might incur chaos if drivers do not know how to retrieve the physical key from key remote when the key remote does not function due to battery discharge or other reasons and/or doors do not respond to the key remote operation. The probability is not so low because I have actually experienced.

Retrieving physical key

This step is also the first step of replacing battery.



Hook of sliding latch knob at top of key remote



Physical key retrieved



Head of sliding latch

Replacing battery

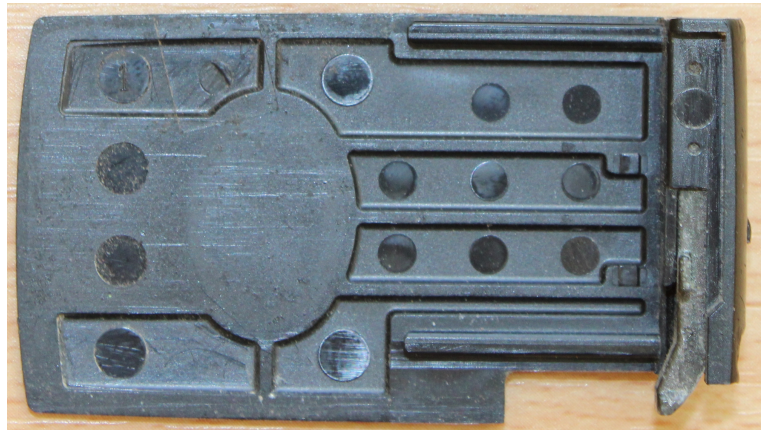
Battery including human beings is not immortal.



Slide off rear cover



Front of rear cover



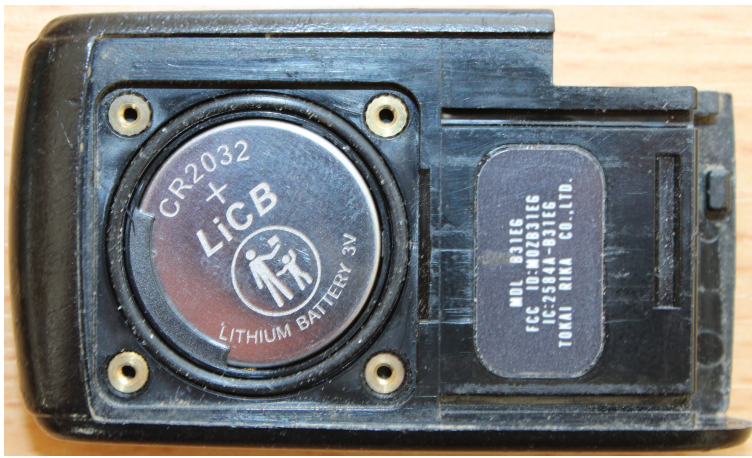
Rear of rear cover (Sliding latch knob is exposed)



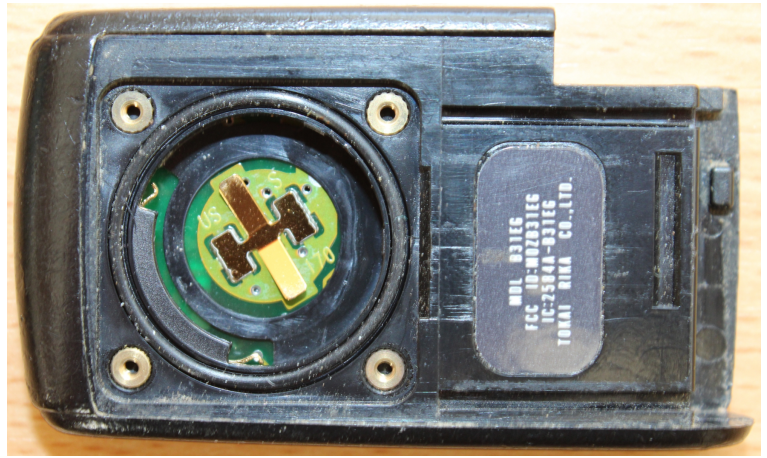
Battery cover screwed



Battery cover unscrewed



CR2032 battery exposed



CR2032 removed for replacement



Phillips Plus screwdriver

Programming new key remote

In case that a new key remote has to be appended for some reason, programming procedure below is necessary.

- A good working key remote to be copied
- A new key remote to be programmed

| Sequence | Door | Key holder | Response |
|----------------|--|---|----------------------------------|
| Initial | Close all | -- | |
| Copy | -- | Working key remote IN - OUT (1) IN - OUT (2) IN - OUT (3) IN - OUT (4) IN | -- |
| | Open - Close (1) Open - Close (2) Open - Close (3) Open - Close (4) Open - Close (5) Open - Close (6) | -- | |
| | -- | OUT | -- |
| Program | -- | New key remote IN (wait until stop blinking) OUT | Red light blinking on dash board |
| Exit | Open - Close | -- | |